

Presentation



INCLUD-ED is an **integrated project** under priority 7 “Citizens and governance in the knowledge-based society” of the **Sixth Framework Programme for Research and Technological Development (FP6)**. The European Union

faces the challenge of creating high quality educational systems and social policies that are more effective and equitable. In this sense, INCLUD-ED, the most significant research endeavour financed under FP6 and focused on compulsory education, special education and vocational training, responds to the following main objective:

To **analyse educational strategies that contribute to social cohesion and educational strategies that lead to social exclusion**, within the context of the European knowledge based society, providing key elements and lines of action to improve educational and social policy.

The **INCLUD-ED consortium** is an **interdisciplinary** team covering anthropology, economics, history, research methods, political sciences, linguistics, sociology and education. It is supported by ten Working Groups, different Free Task Oriented Groups, a Panel of Experts and an Advisory Committee composed of representatives of vulnerable groups.

Areas of study

- Examining the interaction between **educational systems, agents and policies**, throughout compulsory education, vocational training and special education.
- Analysing the educational practices of **tracking** and **streaming**, and the characteristics of strategies to overcome them in school systems.
- Studying the way in which educational exclusion is connected to these four **areas of society**: employment, housing, health and political participation.
- Particularly focusing on five **vulnerable groups** throughout the project: migrants, cultural minorities, youth, people with disabilities and women.
- Analysing the mixed interventions between **educational policy** and other areas of **social policy**, and identifying which strategies overcome social exclusion and which build social cohesion in Europe.
- Studying the **communities** involved in learning projects which have developed the integration of social and educational interventions which promote social inclusion and empowerment.

Potential Impact

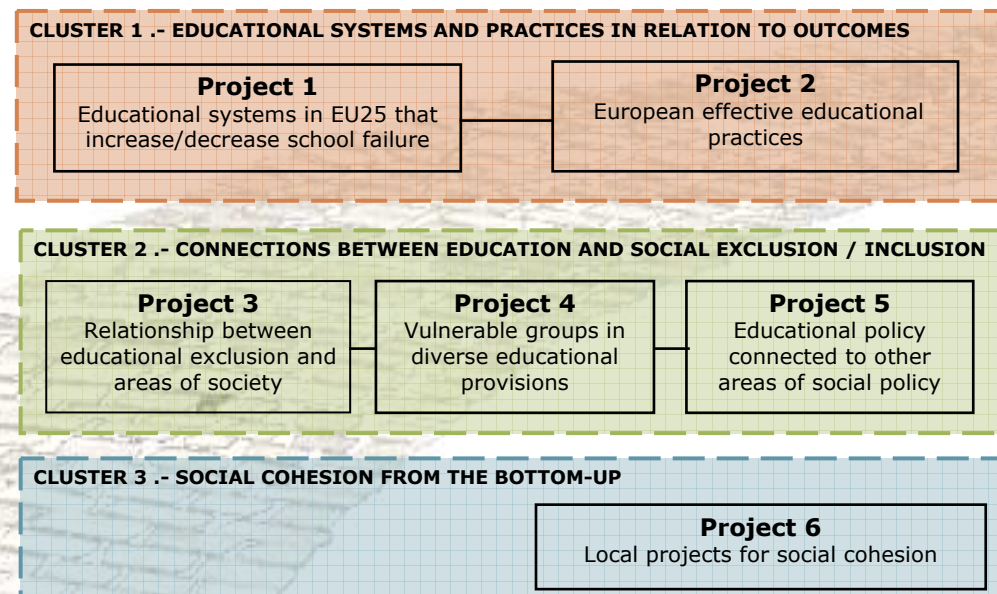
INCLUD-ED, through the **critical communicative research perspective** intends to have a significant **social and political impact** on the European educational and social systems, as was achieved in previous FP projects (e.g. Workaló, FP5). The Critical Communicative Methodology consists of:

Knowledge constructed through Intersubjective dialogue. The researchers bring their expertise and the recent developments in the scientific community into the dialogue and this is contrasted with what social actors think and experience in their everyday lives.

Including traditionally silenced voices. The direct and active participation of the people whose reality is studied throughout the entire research process.

Exclusionary and Transformative Components. Scientific analysis oriented towards identifying strategies that lead to social inclusion (transformative) and those which lead to social exclusion (exclusionary).

Project Structure





Consortium

Coordinator:



Universitat de Barcelona
CREA. Barcelona Science Park (SPAIN)

Partners:



Donau-Universität Krems (AUSTRIA)



Centre for European Policy Studies (BELGIUM)



University of Cyprus (CYPRUS)



Helsingin Yliopisto (FINLAND)



Eötvös Loránd University (HUNGARY)



Università degli Studi di Firenze (ITALY)



Dublin City University (IRELAND)



Vityauto Didziojo Universitetas (LITHUANIA)



Università ta Malta (MALTA)



Baltic Institute of Social Science (LATVIA)



Universitatea de Vest din Timisoara (ROMANIA)



Andragoski Center Republike Slovenije
(SLOVENIA)



Universitat Autònoma de Barcelona (SPAIN)



The University of Nottingham (UNITED KINGDOM)

Coordinator contact details

CREA, Centre of Research in Theories and Practices that Overcome Inequalities.

Barcelona Science Park
Edifici Florensa, C/ Adolf Florensa, 8
08028 Barcelona (SPAIN)

Tel. +34 93 403 45 48/49
Fax: +34 93 403 45 62
Email: includ-ed@ub.edu
<http://www.ub.es/includ-ed/>

Project details

Contract number: CIT4-CT-2006-028603

Project acronym: INCLUD-ED

Project name: "Strategies for inclusion and social cohesion in Europe from education"
Priority 7. Citizens and Governance in a Knowledge-based Society. Integrated Project. 6th FP. European Commission

Total Cost: 3.562.851 €
Commission funding: 3.361.504 €

Includ ED
Strategies for inclusion and
social cohesion in Europe
from education



CITIZENS AND GOVERNANCE
IN THE KNOWLEDGE-BASED SOCIETY